

# ACCOMMODATION GUIDE 2015-16



Albemarle works with a number of partner organisations who offer student accommodation in a safe, secure environment. Whilst the college itself is not directly connected to any of these companies, we do visit the

accommodation to ensure that it is up to the standard that we would expect before putting them on our list of recommended places to stay. The accommodation options open to students are as follows:

## Host Families

Students rent a room within a family home and are able to choose between cooking for themselves or having their meals prepared for them. In many cases students can choose the type of family and other options such as location and whether the family has pets.

## Student Flat Accommodation

This is ideal for students who would like more independence and generally suits students who are over-18. The flats are one or two bedroom or studio flats in purpose built student blocks, with security and often gym/recreational facilities too.

## Student Hostel

Student hostels generally provide one-bed rooms with communal cooking and shower rooms, and the option of meals provided. They are also equipped with recreational rooms for games, t.v. and socialising. These tend to be the cheapest type of student accommodation.

Please see inside for our recommendations including the location of accommodation in relation to the college

## UNITE - the Heart of Student Living

Over 18

Woburn Place, 19-29 Woburn Place,  
Bloomsbury, London WC1H 0AQ

Tel: +44 (0) 117 302 7497

[www.unite-students.com](http://www.unite-students.com)

Woburn place offers a range of high-quality student flats, furnished to a high standard with modern appliances. A choice of studios flats, one-bed & two-bed apartments, and twin rooms are available. All bedrooms have a study area and en-suite bathroom, plus studio flats have large beds and your own hideaway kitchen. Facilities include wi-fi, bike storage, CCTV, security, TV, DVD, Common room, vending, washer/dryers. Utilities included.

- Classic Studio at £319 per week
- 2 bed flats from £299 per week



## Lero Property

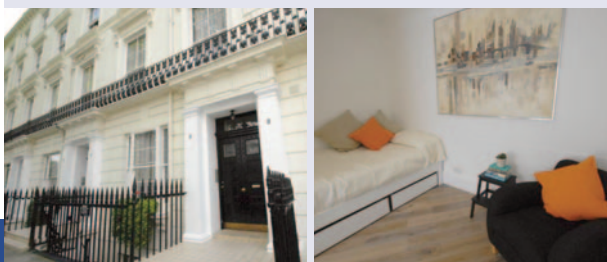
24 Leinster Terrace, London W2 3ET

Tel: +44 (0) 20 7402 7768

email: [lero@lero.co.uk](mailto:lero@lero.co.uk) [www.leroproperty.com](http://www.leroproperty.com)

Lero Properties has been accommodating students from all over the world for over 40 years. Just a minute's walk from Hyde Park (zone 1) and close to numerous supermarkets, restaurants and shops as well as Notting Hill Gate, Lancaster Gate, Queensway, Bayswater and Paddington underground stations and many bus routes, so it's very easy to get to College. Their office is across the road from the student flats.

- Studios £250 per week
- Larger units £275-£352 per week
- 1 and 2 bed flats from £325-£400 per week
- 2 bed flats from £530-£600 per week



## Hosts International

Morley House, 320 Regent Street,  
London W1B 3BB

Tel: +44 (0) 20 7323 5244

email: [info@hosts-international.com](mailto:info@hosts-international.com)

[www.hosts-international.com](http://www.hosts-international.com)

Situated in residential areas of London, close to a tube or rail stations. Our carefully selected families are experienced in hosting overseas students and are there to ensure the students feel at home and are treated as a member of the family, not as a paying guest. Bed and breakfast, half board or self-catering. Zones 1,2,3 and 4.

- From £145-£250 per week



Over  
& under 18





## HFS London

558 Commercial Road, London E14 7JD

Tel: +44 (0)20 3069 2048

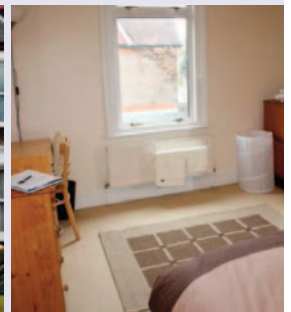
website: [www.hfslondon.com](http://www.hfslondon.com)

email: [info@hfslondon.com](mailto:info@hfslondon.com)

Over  
& under 18

HFS London only recruit host families whose genuine motivation is to offer a home away from home experience to their guests. HFS are British Council Registered and have a strong safeguarding and child protection structure.

- Discounted rate for Albemarle students.
- Bed & breakfast, half board or self-catering.
- Zones 1-4.
- From £125 per week.



## Prodigy Living Spitalfields

9 Frying Pan Alley, London E1 7HS

Tel: +44 (0) 20 3675 9210

[www.prodigy-living.co.uk](http://www.prodigy-living.co.uk)

Over  
& under 18

Just minutes from Liverpool Street Station, Spitalfields is newly renovated and 33-floors high - providing incredible views of the capital. Spitalfields has a wonderful atmosphere for its residents. With studios, en suite rooms and great community spaces it's a great place to experience London university lifestyle, relax and make friends. Both studio and en suite rooms offer stylish interiors and come fully furnished and inclusive of all utility bills, electricity, heating, water and contents insurance.

- Classic studio from £385 per week



## Canto Court

122-128 Old Street, London EC1V 9BD

Tel: +44 (0)20 7608 2554

email: [cantocourt@realstargroup.com](mailto:cantocourt@realstargroup.com)

[www.crm-students.com](http://www.crm-students.com)

Canto Court is situated on Old Street, a cultural and recreational hub of London, popular amongst students and trendsetters alike. Canto Court is situated in Zone 1 and offers an exclusive choice of beds in one of the coolest areas in London with a vibrant and thriving network of galleries, venues and nightlife nearby. Old Street station is only 3 minutes away and a network of buses will take you anywhere you want

- Classic Studio from £279 per week
- 2 bed flat from £439 per week



Over  
& under 18



## Accommodation Options

A student's choice of accommodation is usually influenced by:

- Age
- Cost
- Availability of food they prefer to eat
- The parents wishes
- The students ability to live independently
- How near the accommodation is to the College

Students aged under 18 can only live independently if they are living with a UK guardian. All students under 18 who are not living with a UK guardian must stay with a host family for at least the first term (half board – breakfast and evening meal).

Students over 18 when they begin studying at Albemarle Independent College can choose from:

- Host Family (half board – breakfast and evening meal)
- Student accommodation
- House/Flat share

## Host Families

Host family homes are within a maximum of 45 minutes travel time from the College by bus or underground. A host family can provide anything from a supportive family experience or simply a room within a home.

We work closely with accommodation agencies in London who ensure that host families are carefully selected to ensure friendly, safe and comfortable environments in which students are able to both relax and study effectively. Each student has a single or twin study-bedroom. Bathroom facilities are usually shared. There is normally use of a kitchen or breakfast and an evening meal are taken with the family. Students have their own keys.

All rent money is paid directly to the accommodation agency with whom the student makes the booking or to the host family not to Albemarle College. The cost varies according to the type and meal plan. Typically the cost is between £120 and £275 per week. One months advance rent and a deposit is often payable on booking. Payment is made in advance every month, if the student does not stay in the accommodation during Christmas and Easter holidays but does not want anyone else to occupy their room a retainer payment is normally made. Once the application form is completed the accommodation agency finds the closest match to your requirements.

## Renting a Flat

Any students wishing to rent a flat in London can only do so if their parents have provided the College with written confirmation that they are allowed to do so. The College cannot provide details of letting agencies and legal advice concerning the renting of a flat.

If you wish to rent a flat or room in London you should check that the Landlord is accredited with one of the schemes listed below. If they are it means they are signed up to the London Rental Standard, a strict code of practice set by the Mayor of London. More details about The London Rental Standard can be found at [www.london.gov.uk](http://www.london.gov.uk)

- National Landlords Association (NLA)
- Residential Landlords Association (RLA)
- London Landlord Accreditation Scheme (LLAS)
- Association of Residential Letting Agents (ARLA)
- UK Association of Letting Agents (UKALA)
- Royal Institution of Chartered Surveyors (RICS)
- National Approved Lettings Scheme (NALS)

**Albemarle Independent College,**  
**18 Dunraven Street, Mayfair,**  
**London W1K 7FE**  
**Tel: 020 7409 7273 Fax: 020 7629 9146**

**[www.albemarle.org.uk](http://www.albemarle.org.uk)**

